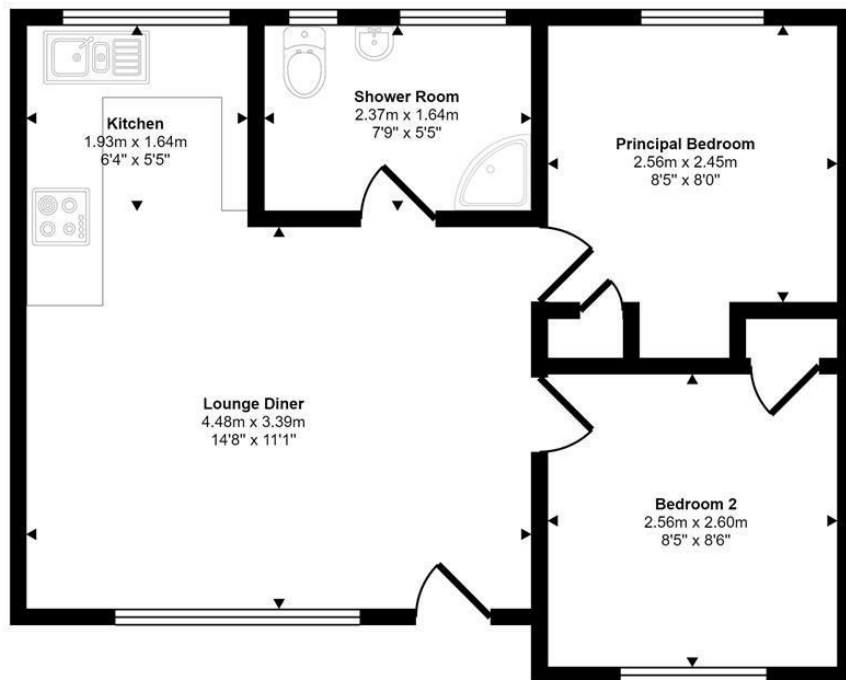




Gimingham Road | Norwich | NR11
Offers In Excess Of £95,000

abbotFox

Approx Gross Internal Area
38 sq m / 414 sq ft



Floorplan

This floorplan is only for illustrative purposes and is not to scale. Measurements of rooms, doors, windows, and any items are approximate and no responsibility is taken for any error, omission or mis-statement. Icons of items such as bathroom suites are representations only and may not look like the real items. Made with Made Snappy 360.

Energy Efficiency Rating		
	Current	Potential
Very energy efficient - lower running costs		
(92 plus) A		
(81-91) B		
(69-80) C		
(55-68) D		
(39-54) E		
(21-38) F		
(1-20) G		
Not energy efficient - higher running costs		
England & Wales		EU Directive 2002/91/EC

Disclaimer – In accordance with the Property Misdescriptions Act, the company gives notice that all descriptions, references to condition, necessary permissions for use and other details are given in good faith and believed to be correct, but any intending lessees do not rely on them as statements of fact, but must satisfy themselves by inspection or other means, as to their accuracy.



abbotFox presents this stylish, two bedroom semi-detached chalet. Having undergone a programme of refurbishment by the current owners, this property is currently run as a successful holiday let, but would also make an exceptional second home or holiday home for any buyer. The accommodation is neatly arranged and comprises; open plan living area, with fully equipped kitchen, two double bedrooms and a re-fitted shower room. The property further benefits from electric underfloor heating and a high quality finish throughout. An internal viewing comes highly recommended.

The seaside village of Mundesley offers a range of shopping facilities including post office and other amenities including two schools, an excellent 9 hole golf course and a health centre. A bus service operates to the resort town of Cromer, the market town of North Walsham and links to Norwich City Centre where more comprehensive facilities can be found.

The North Norfolk Coast is renowned for its sandy beaches, bird reserves and excellent sailing facilities is close by and the famous Norfolk Broads are within easy reach with Wroxham, the acknowledged centre of the Broads network situated about ten miles away. The picturesque Georgian town of Holt is about 12miles and has excellent shopping facilities as well as being the home of Gresham's public school.

Please note that the chalets are for holiday use only and can be occupied between 1st March and 31st October and for a period not exceeding 30 consecutive days. The site is also open between 16th December and 14th January.

